

SmartLink+

User Guide



PHONAK
life is on

Contents

Welcome	5
Internet resources	6
SmartLink+ and accessories	7
User interface	8
SmartLink+ key figures	10
Getting started	11
Charging SmartLink+	11
Switching ON SmartLink+	12
Automatic program selection	14
Microphone opening	16
Attaching the lavalier	16
Practical SmartLink+ use cases	18
Worn by your partner	18
Placed on the table	19
Reporter style	21
Connecting to a TV	22
Connecting to a GPS in the car	25
Remote controlling hearing instruments	26
Choosing the right microphone setting	30

Special functions	32
Keypad lock	32
Using an external microphone	33
Changing the FM channel	35
Scanning into another FM channel	36
Bluetooth	38
What is Bluetooth?	38
What Bluetooth devices can be used?	39
Compatibility	39
Bluetooth operating range	39
Using a Bluetooth device	40
Pairing SmartLink+ with your mobile phone	41
Activating SmartLink+ for mobile phone use	43
Answering a call	44
Making a call	45
Rejecting a call	46
Accepting a call while streaming music via Bluetooth (A2DP)	47
Restarting SmartLink+	48
Displaying the firmware version	49
Optional charging unit	49

Contents

Trouble shooting	50
FM receivers	52
Important notices	53
Declaration of conformity	54
Service and warranty	56

Welcome

Thank you for choosing SmartLink+, an FM transmitter based on Phonak's successful Dynamic FM technology.

By using this high-performance SmartLink+ device with the appropriate Phonak wireless receiver, you will be better able to understand speech in a range of situations.

SmartLink+ has been developed for those who want nothing less than the very best: in meetings, when it is noisy, over distance, at home and at work, in the car and in the mall, on a cellphone, face to face, even when watching TV or listening to music.

Please read this manual carefully to make sure you benefit from all SmartLink+ features.

SmartLink+ is a quality product developed by the Swiss company Phonak, the world leader in FM and hearing instrument technology. With proper care and usage, your SmartLink+ will support your hearing and communication needs for many years.

Phonak – Life is on

Internet resources

- **www.phonak.com/fm**

The direct link to Phonak online FM collection.

Here you will find all relevant information on all our FM products, interesting background information, inspiring user testimonials and various useful downloads.

- **www.FMeLibrary.com**

An extensive and searchable collection of FM articles and reports from publications around the world. Simply choose a keyword and hunt out the articles of interest. All reports are in Adobe PDF format.

- **www.eSchoolDesk.com**

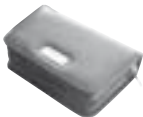
eSchoolDesk is an FM support tool aimed at teachers and hearing professionals, however many end users also find it's information interesting. It features a clearcut explanation of FM technology and its benefits, along with how-to movie clips, a product configurator and links to further reading.

SmartLink+ and accessories

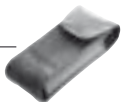
① SmartLink+ _____



② SmartLink+ home and travel case _____



③ Soft case _____



④ Adapter for external connections _____



⑤ Lavalier cord with integrated antenna _____



⑥ Audio cable _____



⑦ Charging unit _____



All accessories can be ordered separately.

User interface



① **ON/OFF**

To turn SmartLink+ ON or OFF, hold down either of its three main microphone keys

② **Microphone functions**



SuperZoom (narrow-angle sound pickup with noise cancellation)



Zoom (wide-angle sound pickup)



Omni (360° sound pickup)

③ **Display**

④ **Bluetooth phone keys**



Accept a call



End a call



+ **F** Redial last phone number used

⑤ **Hearing instrument remote control**



Increase hearing instrument volume



Decrease hearing instrument volume



Change hearing instrument program



Change FM program

⑥ **Keypad lock**

To lock: press **⊖** and **F** together

To unlock: press the same keys again

SmartLink+ key figures

Operating time and charging:

- Operating time when battery is fully charged:
approximately 10-12 hours (depending on the features used)
- Charging time for an 80% charge:
approximately 1 hour
- Charging time for a 100% charge:
approximately 2 hours

Operating range between SmartLink+ (with attached antenna) and its FM receivers:

- Inside a building - approximately 50 feet (15 meters)
- Outside - approximately 130-170 feet (40-50 meters)


Bluetooth operating range

(between SmartLink+ and cell phone):

- Approximately 30 feet (10 meters)

Operating range for hearing instrument remote control and FM channel synchronization of FM receivers:

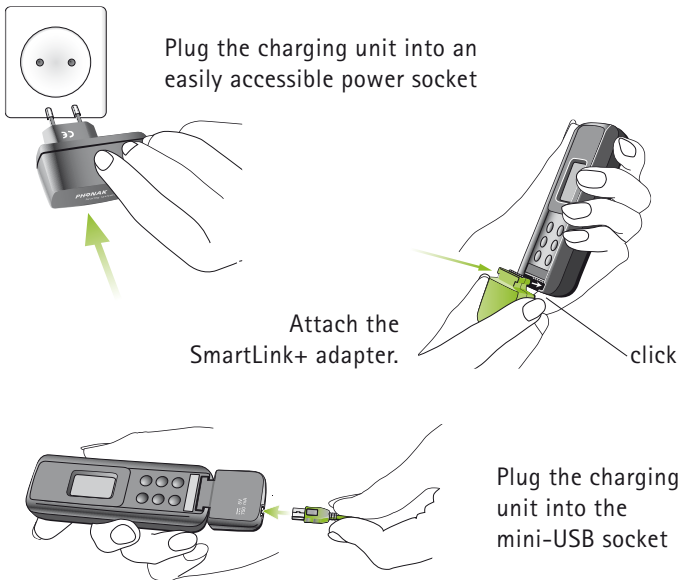
- Approximately 8-10 inches (20cm).

 High-powered electronic equipment, large electronic installations and metallic structures may impair and significantly reduce the operating range of your FM system.

Getting started

Charging SmartLink+

The SmartLink+ contains a non-removable Lithium-ion battery with fast-charge capability. A fully exhausted battery takes around 2 hours to charge fully. It will be about 80% charged within one hour.



⚠ Use only original Phonak charging units

Getting started

- The battery symbol on the SmartLink+ display flashes during charging.
 - The battery cannot be over-charged.
 - The battery symbol stops flashing when the SmartLink+ is 100% charged.
-
- Battery consumption depends on the functions and features used (Bluetooth is especially battery-intensive). When fully charged and used normally, the SmartLink+ operates for approximately 10 – 12 hours.
 - Make sure the socket outlet you plug the charging unit into is easily accessible.



Switching ON SmartLink+

To switch ON:

Press and hold one of the three microphone buttons for two seconds (long press).

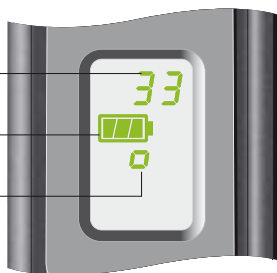
To switch OFF:

Press and hold one of the three microphone buttons for two seconds (long press).



When switching on, the display shows startup information. When the SmartLink+ is ready, the following information appears:

- FM channel number
- Battery status
- Microphone setting



Microphone setting symbols:

	Button	LCD
SuperZoom		
Zoom		∩
Omni		◻

Automatic program selection

At start-up, SmartLink+ automatically selects the most recently used FM channel.

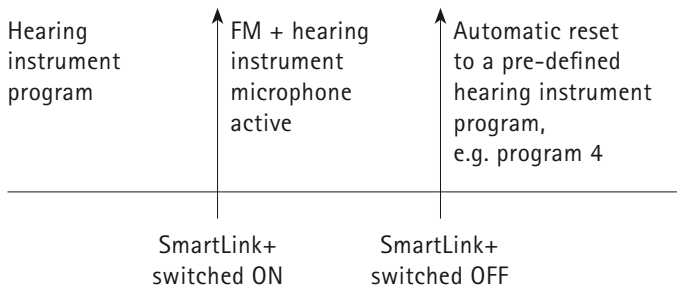
SmartLink+ automatically synchronizes Phonak receivers to this channel, providing the distance between SmartLink+ and these receivers is less than 8-10 inches (20cm).

You may hear a beep tone when the synchronization is completed.

For customers using Phonak hearing instruments that are compatible with analog remote controls:

- At start-up, SmartLink+ automatically sets digital Phonak hearing instruments with remote control compatibility to the "FM + M" program. Your hearing care professional can change this setting to "FM only", if required.
- At switch-OFF, SmartLink+ automatically resets digital Phonak hearing instruments with remote control compatibility to the hearing instrument program.
- Hearing instruments need to be within the operating range of the remote control built into SmartLink+. This range is usually 8-10 inches (20cm).

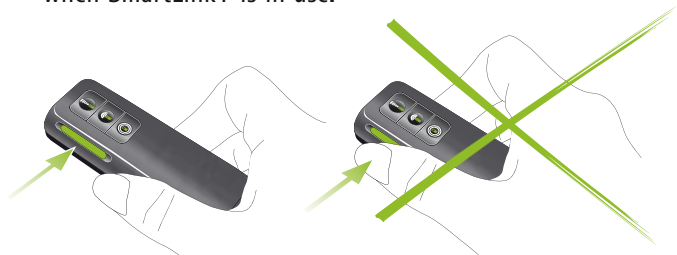
Example of the automatic hearing instrument program setting:



Please ask your hearing care professional about the actual program setting for your particular hearing instrument.

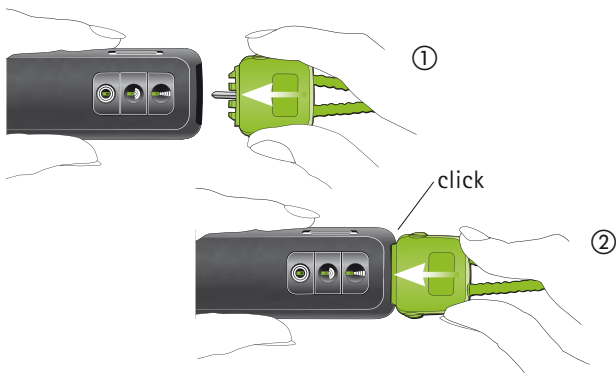
Microphone opening

⚠ Do not cover the microphone openings with your fingers when SmartLink+ is in use.



Attaching the lavalier

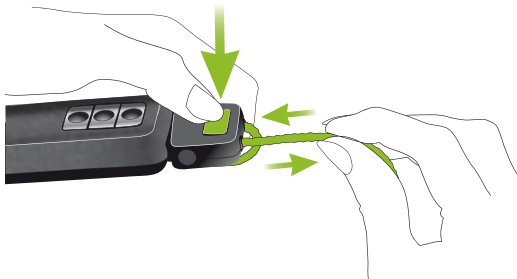
■ **To attach the lavalier:** Slide the connector gently into the slot, following a straight line.



- **To adjust the cord length:**

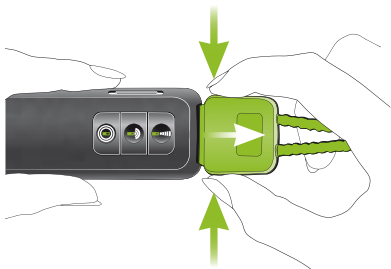
Press the large button to retract or withdraw the cord.

The cord length should be adjusted so that the SmartLink+ is 8 inches (20cm) away from the wearer's mouth.



- **To detach the lavalier:**

Press the side buttons simultaneously and gently pull the connector out of the SmartLink+.



Practical SmartLink+ use cases

Worn by your partner

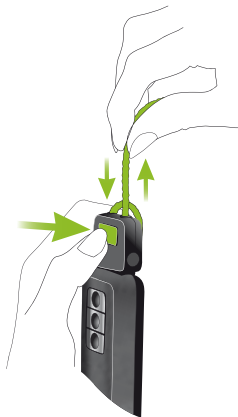
Recommended for conversations with one other person:

- Speaker in an auditorium
- Traveling with another person
- On walks
- During sport
- At home



How to use SmartLink+:

- Pass SmartLink+ to your conversation partner.
- Your partner should wear it around the neck.
- The cord needs to be adjusted as depicted.
- Switch ON SmartLink+ by holding down one of its 3 microphone buttons.



⚠ To ensure optimal speech quality, make sure the distance between the speaker's mouth and SmartLink+ is 8-10 inches (20 cm).

Recommended SmartLink+ settings:



SuperZoom (narrow-angle sound pickup)

Zoom (wide-angle sound pickup)

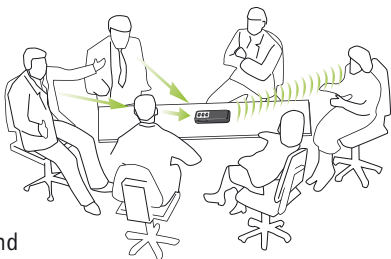
Placed on the table

Recommended use:

- Business meetings
- In restaurants
- In conferences
- At home
(i.e. around the dinner table)

Discussion partners

You



Depending on the distance between the SmartLink+ and yourself, you may need to attach the lavalier cord (antenna) for this use case.

How to use SmartLink+:

- Place it on the table. If using the Zoom setting, the front of SmartLink+ (where the lavalier is attached) should point to the speaker or speakers you want to hear.
If using the omni setting, the orientation of SmartLink+ makes no difference as sound is picked up from all angles.
- Make sure the lavalier is not folded or knotted.
- Switch ON SmartLink+ by holding down one of its 3 microphone buttons.

Recommended SmartLink+ settings:



Zoom (wide-angle sound pickup)

Omni (360° sound pickup),
to be used in low background noise

Reporter style

Recommended for conversations in noisy conditions with one or more speakers close by, such as:

- At parties
- In shopping malls



How to use SmartLink+:

- Hold it in your hand. Make sure you do not cover the microphone opening on the left-hand side of SmartLink+. The front of SmartLink+ should point at the speakers you want to hear.
- Switch ON SmartLink+ by holding down one of its 3 microphone buttons.

Recommended SmartLink+ settings:



SuperZoom (narrow-angle sound pickup)

Zoom (wide-angle sound pickup)

Connecting to a TV

Connect SmartLink+ to your TV or other multimedia device to enjoy crystal clear in-the-ear audio without disturbing others.

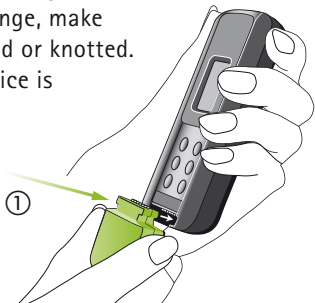


In addition to TV, this function is suitable for use with:

- CD players
- Radio receivers
- Computers and laptops with audio outputs
- MP3 players
- Any other audio devices with a headphone output

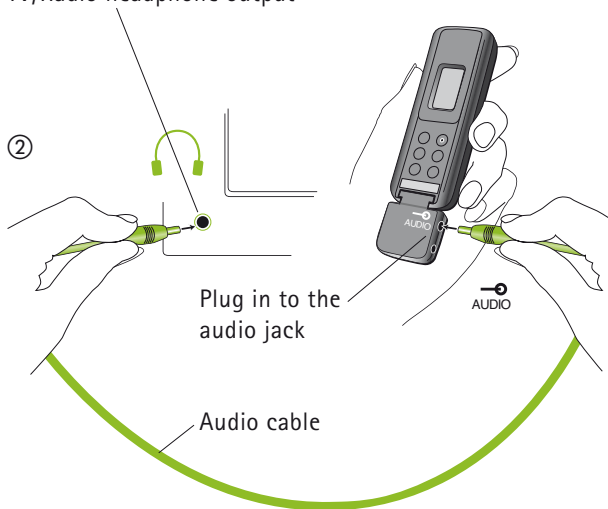
How to use SmartLink+:

- Make sure SmartLink+ is switched OFF.
- Connect SmartLink+ – as pictured on next page – and place it in front of the television or multimedia device.
- Switch ON the television. Your SmartLink+ will automatically switch ON after it detects an audio signal.
- To ensure maximum operating range, make sure the lavalier cord is not folded or knotted.
- When the television or audio device is switched OFF, SmartLink+ will automatically switch OFF after approximately 40 seconds.



Connect the adapter for external connection

TV/Radio headphone output



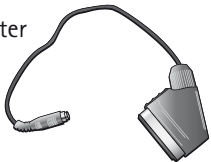
The volume of the audio output on some televisions is adjustable. Please consult your television's own user guide to learn about this feature, if available.

For devices without headphone output sockets:

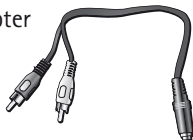
If your TV or audio device does not provide a headphone output socket, you can connect SmartLink+ to your device's Cinch or Scart socket instead. Just ask your hearing care professional for the Phonak's Scart or Cinch adapter.

Practical SmartLink+ use cases

Scart adapter



Cinch adapter



If there is no Cinch or Scart socket available, place SmartLink+ in front of the television or other device's loudspeaker. Then switch ON SmartLink+ in Zoom or SuperZoom mode, before switching ON your television.



Recommended SmartLink+ settings:



SuperZoom (narrow-angle sound pickup)

Zoom (wide-angle sound pickup)

Connecting to a GPS in the car

While a TV set provides a constant audio signal, GPS devices only send out audio information every few seconds or minutes. SmartLink+'s permanent audio input setting has been developed with exactly these products in mind.

To activate the permanent audio input:

- Switch ON SmartLink+ by holding down one of its 3 microphone buttons for 2 seconds.
- Attach the adapter for external connections to the SmartLink+.
- Connect one end of the audio cable to the SmartLink+'s adapter for external connections interface, and the other to the audio output socket of the GPS.
- Switch ON the GPS.



If you leave the car, proceed as follows:

- Remove the audio cable and the adapter for external connections from the SmartLink+.
- If you do not need the SmartLink+: switch OFF SmartLink+. If you want to continue using SmartLink+: hold down the Zoom or SuperZoom button for one second. This will switch OFF the GPS mode and activate the microphones in SmartLink+.

Remote controlling hearing instruments

SmartLink+ features an analog remote control, which is compatible with many Phonak hearing instruments. Please ask your hearing care professional whether your hearing instrument is capable of receiving control commands from the SmartLink+.



* **FM only:**

The microphone in the hearing instrument is muted.
Listening is via SmartLink+ only.

* **FM+M:**

The microphone in the hearing instrument stays ON.
Listening is via the SmartLink+ and the hearing instrument microphone(s).

The remote control is always accessible, even if the SmartLink+ is switched OFF.

The button and LCD symbols are as follows:

Press key	Symbol in display for one second
⊕	V+
⊖	V-
Ⓟ	P1 (or P2, P3, P4)
ⓕ	FM or FM+M




- Your hearing instrument(s) may provide acoustic confirmation of program selection. Refer to your hearing instrument user guide for further information.
- Pressing the key **(F)** automatically synchronizes the frequency, indicated by a sequence of 4 confirmation beeps (depending on the hearing instrument setting).
- Phonak recommends holding the SmartLink+ less than 8 inches (20 cm) away from the hearing instruments, in a position where its display is easily visible.
- Press **(P)** to activate your hearing instrument's next program.
- Each time **(F)** is pressed, the program alternates between FM and FM+M mode.




Example:

Key	Ⓟ	→	Ⓣ	→	Ⓣ	→	Ⓟ
-----	---	---	---	---	---	---	---

Hearing instrument program	P4	→	FM	→	FM+M	→	P4
----------------------------------	----	---	----	---	------	---	----

Choosing the right microphone setting

Key symbol	Recommended for	
	Noise level	Focus
SuperZoom 	high	fewer speakers
Zoom 	medium	fewer speakers
Omni 	low	more speakers

Voice pickup pattern	Symbol in display
Focused in a narrow angle in front of the SmartLink+	
Wider angle in front of the SmartLink+	
360° around the SmartLink+ The speakers should be close to the SmartLink+	

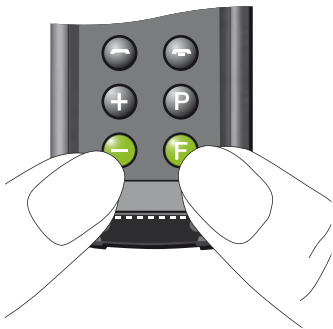
Special functions

Keypad lock

The SmartLink+ features a keypad lock, to prevent the accidental pressing of its controls.

To lock the keypad:

Switch ON the SmartLink+, then simultaneously press **⊖** and **Ⓢ**. **LOC** appears in the display.



To unlock the keypad:

Press the same two keys again.

Note:

- Incoming calls can be answered while the SmartLink+ is locked: simply press the green telephone key to accept a call. The keypad lock is automatically reactivated at the end of the call.
- In order to switch OFF SmartLink+, you must unlock its keys first.

Using an external microphone

The SmartLink+ can be used with an external mini clip-on microphone (called MM8) or a miniaturized boom microphone (called iBoom). This can be beneficial in a variety of situations such as college lectures or presentations, or when using SmartLink+ in the car.

- The letter **M** on the display means that the SmartLink+ is relaying an audio signal from an external microphone or source, such as a TV set.
- Use the lavalier antenna to ensure optimal operating range.

MM8



iBoom





Switch ON SmartLink+ and connect the external microphone.

- ⚠ **MM8 features a separate ON/OFF switch. Ensure that the MM8 is correctly switched ON!**

Plug in here:  MICRO



Special functions

Usage	Action
External microphone only.	<p>Plug in the external microphone as illustrated and switch it ON, if necessary.</p> <p>The SmartLink+ begins relaying speech as soon as it detects a signal. R appears in the display.</p>
SmartLink+ microphone and external microphone simultaneously.	<p>Plug in the external microphone and press the SmartLink+  key.</p>
Switch OFF SmartLink+ microphone; only the external microphone remains active.	<p>Press the  key again.</p>
End of use.	<p>Unplug the external microphone and detach the SmartLink+ adapter. Then switch OFF the SmartLink+.</p>

Changing the FM channel

Channel changing is recommended if the channel being used is experiencing interference, or if other users are using the same FM channel nearby.

- Press the **+** and **F** keys together. The channel indicator on the display will begin flashing.

Channel indicator



- Press **+** to move up a channel or **-** to move down a channel.

SmartLink+ resumes normal mode 10 seconds after the last key press. The channel indicator stops flashing and the FM receivers are synchronized. Make sure that SmartLink+ is within 8 inches (20cm) of the FM receivers – otherwise these receivers may not be synchronized.

Scanning into another FM channel

This function enables you to listen to a speaker who is wearing another Phonak FM transmitter.

This feature works similarly to the scan function in many car stereos: your FM system simply seeks out the channel being used by the other FM transmitter.

- Hold the SmartLink+ 8 inches (20 cm) away from the hearing instruments.
- Switch ON SmartLink+ and press **+** and **P** simultaneously. The SmartLink+ automatically switches OFF, while the FM receivers start scanning for the channel of the other transmitter. This ensures that the receivers do not detect their own channel. **S** in the display indicates that the SmartLink+ is in Scanning mode.



-
- When you hear a voice, decide whether this voice is the one you are seeking.
 - If **yes**, you do not need to do anything further.
If **no**, press **(+)** and **(P)** once more to continue scanning.
 - To return to your own FM channel, simply switch ON your SmartLink+.

FM receivers may fail to detect an FM signal from another transmitter if this signal is weak or the FM signal cannot be identified. It is also possible for the FM receivers to stop scanning on a channel with interference or indistinct voice signals.

Bluetooth

What is Bluetooth?

Bluetooth provides a way for devices such as mobile telephones, laptops and personal computers to communicate wirelessly.

Your SmartLink+ supports Bluetooth so that audio can be wirelessly received from different audio devices and transmitted to your hearing instruments. For example, you can receive mobile phone calls directly to your hearing instruments or listen to music from your Bluetooth-enabled laptop.

For further information about Bluetooth, visit www.bluetooth.org.

What Bluetooth devices can be used?

Firstly, check whether the device you wish to use is Bluetooth-enabled: look for the following symbol either on the device itself or in its user guide.



Secondly, the range of possible applications on a Bluetooth-enabled device is defined by its "Profiles". In other words, the device you wish to use with your SmartLink+ must support the appropriate Bluetooth profiles. These differ depending on what you want to do with your SmartLink+:

-
- To receive mobile phone calls your mobile phone must support either the "Handsfree" or "Headset" profile. Many but not all mobile phones support these Bluetooth profiles. Look for this information in your mobile phone's user guide.
 - To listen to music from your mobile phone, MP3 player or PC, you may use the "A2DP" or "Stereo Headset" profile. Fewer devices support this Bluetooth profile. Look for this information in your device's user guide.

Compatibility

Although Bluetooth is a widely-supported standard, manufacturers differ in terms of how they implement it.

Unfortunately, some Bluetooth-enabled devices are compatible only with certain other devices.

If you experience a problem with the connection between your device and SmartLink+, or if you are uncertain about your device's Bluetooth capabilities, please consult your device's user guide or ask its manufacturer.

Bluetooth operating range

Your SmartLink+ supports Bluetooth operation up to a range of 30 feet (10 meters). A direct line-of-sight between your SmartLink+ and your other Bluetooth device is not required.

However the following factors may affect the range achieved:

Bluetooth

- Environmental interference may reduce Bluetooth's operating range.
- The Bluetooth device you are connecting with may only support a more limited range than the 30 feet (10m) offered by SmartLink+.

If your Bluetooth device moves out of range of your SmartLink+ and has an active audio connection, this connection will be terminated. If the device is then moved back into range of your SmartLink+, it may or may not resume streaming to your SmartLink+. This depends entirely on the device in question.

Using a Bluetooth device

If your device is Bluetooth-enabled and supports the appropriate profiles, it can communicate with the SmartLink+ after completing just two simple procedures:

Pairing and connecting

- The pairing procedure allows you to control which Bluetooth devices are permitted to communicate with each other. It only needs to be completed once for each device you wish to use with your SmartLink+. The pairing procedure is described in detail for different Bluetooth devices in the sections overleaf.
- Once a device is permitted to communicate with the SmartLink+ (via the pairing procedure), the connection procedure configures the device to output its audio signal over the Bluetooth connection. This procedure is also described in the

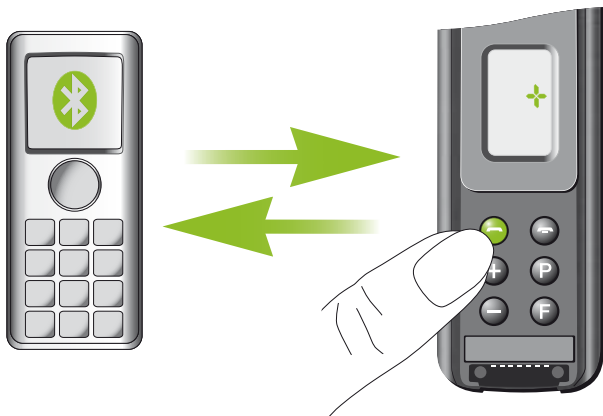
sections overleaf. (Note: some Bluetooth devices perform this connection procedure automatically after pairing is complete.)

Pairing SmartLink+ with your mobile phone

As mentioned previously, it is only necessary to perform the pairing procedure once. This procedure is controlled by your mobile phone.

Different mobile phones have different menu structures. Please refer to your mobile phone's user guide or dealer support if you cannot complete the pairing procedure with the generic steps described here:




- Charge and turn ON both your SmartLink+ and mobile phone. Place them next to each other.
- Locate your phone's connectivity settings. Look for "Bluetooth" feature in the main menu or one of the submenus (possibly named "Connectivity" or "Connections").
- Once found, ensure that your phone's Bluetooth feature is turned on.
- Initiate the pairing process on your SmartLink+ by pressing and holding the green telephone button for 7 seconds, until the display starts blinking. After 2-3 seconds the Bluetooth sign will appear. Your SmartLink+ will remain in the pairing mode for one minute or until the pairing is completed.



- On your mobile phone, choose to search for Bluetooth devices.
- After searching your mobile phone will present a list of Bluetooth devices discovered. Select "SmartLink+" from this list.
- Your mobile phone may then ask you to enter a passcode. Enter "0000" (four zeros).
- Your SmartLink+ should now be paired to your mobile phone. Some mobile phones may ask which Bluetooth service you wish to enable. Select "Headset" or "Stereo Headset".

Activating SmartLink+ for mobile phone use

To use SmartLink+ with your mobile phone, activate the Bluetooth link between the mobile phone and the SmartLink+ as follows:

- Select SmartLink+ from the mobile phone's list of coupled devices (refer to your phone's user guide).
- If the  symbol is not already showing on the SmartLink+ display, switch ON the SmartLink+ and hold down the green telephone key until the  symbol appears. After a few seconds, the  sign will appear, which confirms that activation is complete.



Answering a call

To answer phone calls, the SmartLink+ must be activated for mobile phone use. To answer an incoming call, you do not need to touch the mobile phone.

- The Bluetooth sign in the SmartLink+ display starts flashing when a call is received.


))) **f** SmartLink+ automatically switches analog remote-controllable Phonak hearing instruments to the "FM + M" program to relay the ringing tone.


Your hearing professional can change this setting to FM only if required.

- To answer the call, press the green SmartLink+ phone key on the left.






-
- Speak directly into the SmartLink+. You will hear the caller's voice in both hearing instruments.
 - SmartLink+ continues to relay incoming calls to the hearing instruments as long as the Bluetooth sign is visible on the SmartLink+'s display (even if SmartLink+ is switched OFF).


 Ensure that your hearing instrument's FM receivers are permanently attached and switched ON.

 Users of hearing instruments without analog remote control functionality must ensure their hearing instruments are switched to an FM program in order to hear the ringing tone of an incoming call.

Making a call

The SmartLink+ must be switched ON and connected to the mobile phone in order to make calls – see page 43.


- Enter or select a number to call on the mobile phone, press  on the SmartLink+ for voice dialing, or press  and  to dial the last-used phone number.
- The mobile phone's voice dialing feature can also be used if available. Refer to the mobile phone's instructions.

 SmartLink+ automatically switches remote-controllable Phonak hearing instruments to the "FM + M" program.

Bluetooth

- Speak into SmartLink+ when the person you are calling answers.
- To end the call, press the red SmartLink+ telephone key. Your hearing instruments will automatically reset to the last program used.

Rejecting a call

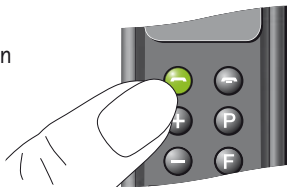
If you prefer not to answer a call, short press the red phone key on the right of SmartLink+ until the  symbol appears.



Accepting a call while streaming music via Bluetooth (A2DP)

If you are listening to music on your Bluetooth MP3 player (A2DP) and a phone call is received, SmartLink+ will instantly send a command to the MP3 player to pause the music, sending the phone's ringing signal to your FM receivers and hearing instruments instead.

- Press the SmartLink+'s green phone key to accept the incoming call.



- To end the call, press the red telephone button.



Once a call has been ended, a command is automatically sent to the MP3 player to resume playing music.

⚠ The successful operation of this feature depends largely on how Bluetooth is employed by the MP3 player. Phonak cannot guarantee that the Bluetooth connection works as described for all MP3 players in all situations.

Restarting SmartLink+

In case of a system problem, SmartLink+ can be restarted by simultaneously pressing the three microphone keys.



When these buttons are pressed, the SmartLink+ will switch itself OFF and restart automatically.

In case of a system error, SmartLink+ displays the error code for ten seconds and restarts afterwards automatically.

Displaying the firmware version

Should you need to know the firmware version of your SmartLink+, press  and **F** simultaneously.

- The DSP firmware version is displayed. e.g. "d-1_2".

Then 2 seconds later...

- The second part of the DSP firmware version is displayed. e.g. "d+FFF"

2 seconds later...


- The ARM firmware version is displayed. e.g. "c123".

2 seconds later...

- The Bluetooth firmware version is displayed. e.g. "BT172".

Optional charging unit

Phonak offers an optional twin charger for SmartLink+, for use when two SmartLink+ devices need to be charged simultaneously. It is also suitable for use with any other Phonak FM transmitter that features a mini-USB charging socket.

 Only use original Phonak charging units for your SmartLink+!

Trouble shooting

Situation

SmartLink+ does not switch ON.

Radio interference.

Voices are inaudible when
the SmartLink+ is switched ON.

Poor speech intelligibility.

Most probable cause	Remedy
Battery exhausted.	Charge the SmartLink+ (2 hours minimum).
Extraneous cause: radio antenna or similar interfering devices nearby.	Change channel (see page 35).
<ul style="list-style-type: none"> a) Hearing instrument set to wrong program. b) Receiver switched OFF. c) Radio frequency not synchronized. 	<ul style="list-style-type: none"> a) Check hearing instrument program/press F. b) Switch ON receiver. c) Press F to make the SmartLink+ resynchronize.
SmartLink+ is positioned too far away from the speaker.	<ul style="list-style-type: none"> a) Select another microphone setting (see page 30). b) Move the SmartLink+ closer to the speaker.


FM receivers

An FM System consists of an FM transmitter – such as SmartLink+ – and in most cases two FM receivers.

There are different types of FM receivers available:

- Miniaturized universal Dynamic FM receivers as Phonak's MLxi. MLxi can be used with both Phonak and many other brands of hearing instrument.
- Design integrated, miniaturized Phonak Dynamic FM receivers as ML12i, ML11i, ML10i and ML9i. These receivers are tiny in size and designed to fit the style and form Phonak's hearing instruments.
- Induction-based FM receivers such as Phonak's MyLink.

If you have any questions regarding FM receivers, consult your hearing care professional or visit www.eschooldesk.com

 **SmartLink+ should only be used with Phonak FM receivers.**

Important notices

- Do not use your SmartLink+ in a place where it is prohibited to use electronic devices, e.g. on airplanes or in hospitals. If in doubt, please ask the person in charge.
- Persons with pacemakers or other medical devices should ALWAYS consult their physician, the manufacturer of their pacemaker, or other medical device BEFORE using SmartLink+. The use of SmartLink+ with a pacemaker or other medical devices should ALWAYS be in accordance with the safety recommendations of the physician responsible for your pacemaker or the pacemaker manufacturer.
- Do not use two or more SmartLink+ transmitters on the same FM channel.
- Please note that radio signals might also be picked up and overheard by other people.
- Before using SmartLink+ in another country, contact your hearing care professional to make sure the use of your radio channels is permitted in that country.
- Do not use water or other liquids to clean the SmartLink+.
- Only use original Phonak accessories.
- Only use the original Phonak SmartLink+ charger.
- Your SmartLink+ should only be repaired at an authorized service center.

Declaration of conformity

Hereby, Phonak Communications AG, declares that the SmartLink+ is in compliance with the essential requirements and other relevant provisions of Directive 1999/5/EC.

To obtain a copy of the Declaration of conformity, please contact the local Phonak AG representative, whose address can be taken from the list of Phonak distributors worldwide.

This device complies with part 15 and part 95 of the FCC rules and with RSS 210 of Industry Canada.

Operation is subject to the following two conditions:

(1) This device don't cause harmful interference and (2) must accept any interference received, including interference that may cause undesired operation.

The transmitter is authorized by rule under the Low Power Radio Service (47 C.F.R. Part 95) and must not cause harmful interference to TV reception or United States Navy SPASUR installations.

You do not need an FCC license to operate the transmitters. The transmitters may only be used to provide: auditory assistance to persons with disabilities, persons who require language translation, or persons in educational settings; health care services to the ill; law enforcement tracking services under agreement with a law enforcement agency; or automated maritime telecommunications system (AMTS) network control communications. Two way voice communications and all other types of uses not mentioned above are expressly prohibited.

Warning:

Changes or modifications made to this equipment not expressly approved by Phonak may void the user's authority to operate the equipment.

Service and warranty

Phonak provides a manufacturer's limited warranty for your SmartLink+. This covers all manufacturing and material defects. Problems with SmartLink+ arising from improper handling or care and repairs made by an unauthorized party are not covered by the warranty.

Please ask at the point of sale for full details of this warranty. The salesperson will note the serial number of your SmartLink+ below. It will be needed in the event of a warranty repair.

Serial number SmartLink+:

Date of purchase:

Serial number(s) – FM receiver(s):





Important notes for all users.



Special notes for users of Phonak hearing instruments with analog remote control compatibility.



The CE symbol is confirmation by Phonak AG that this Phonak product meets the requirements of the R&TTE Directive 1999/5/EC on Radio and Telecommunication Terminal Equipment. The alert sign means that potential restrictions on its use are applicable in one or more European countries.



This symbol indicates that it is important that the user refers to associated warnings given in this user guide.



The symbol with the crossed out disposal bin indicates that this product shall not be treated as household waste. Please hand over your old or unused product to the applicable collection point for the recycling of electrical and electronic equipment or bring your old product to your hearing care professional for appropriate disposal. By ensuring this product is disposed of correctly, you will help prevent potential negative effects on the environment and human health.

Operating conditions

This product has been designed for trouble-free operation without restrictions when used as intended, unless otherwise stated in this user guide.

Transportation and storage conditions

Temperature should not exceed limits of $-20^{\circ}/60^{\circ}$ Celsius at a relative air humidity of 65% for extended periods during transportation and storage. Air pressure between 500 and 1100 hPa is not detrimental to this device.

Manufacturer:

Phonak Communications AG
Laenggasse 17
CH-3280 Murten
Switzerland

EU Representative:

Phonak GmbH
D-70736 Fellbach-Oeffingen
Germany

www.phonak.com