

DigiMaster X

Installation Instructions

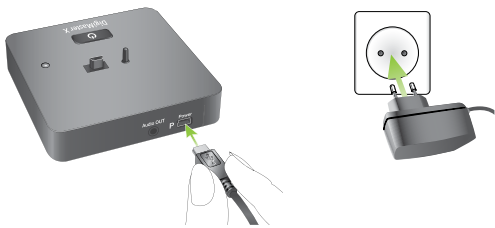
DigiMaster X is a Dynamic SoundField receiver that upgrades an amplification system to intelligent dynamic behavior. This guide is aimed at professional installers.

Product description

- ① Audio output
- ② Power input
- ③ mini USB interface
(for charging inspiro transmitter)
- ④ Status indicator (LED)
- ⑤ ON/OFF switch



Connect to the mains



Pairing with inspiro

(see DigiMaster X package insert)



Placement

- The distance between the DigiMaster X and the room's existing amplifier system should be as short as possible.
- The power supply for the DigiMaster X and the power supply for the amplifier can be fed from the same mains.
- Do not place the DigiMaster X in a metallic cabinet (shielding effect could occur).

Connecting the wirings

- Switch Off the amplifier and DigiMaster X.
- Connect the DigiMaster X audio output with the microphone input of the amplifier. Use professional-grade audio cables.
- Switch On the amplifier and DigiMaster X.

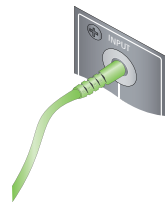
Setting the microphone gain

The correct microphone gain setting is crucial to avoid acoustical feedback.

- Reduce the input gain of the amplification system
- Position the microphone correctly and switch On DigiMaster X
- Increase the DigiMaster X's volume up to + 8dB via the inspiro menu
- Increase the input gain of the amplification system until acoustical feedback occurs
- Reduce the gain of the amplification system until the feedback disappears
- Walk around the room and check that every position is free of feedback
- Reset the DigiMaster X's volume to 0dB or the newly desired volume via the inspiro menu

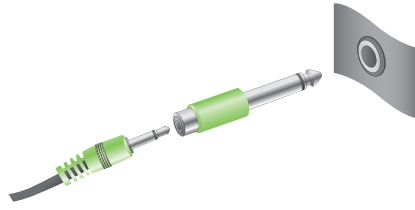
Please note: the microphone gain of the classroom amplification system cannot be accidentally changed. The volume in the classroom will be set with the inspiro.

Connection to amplification system



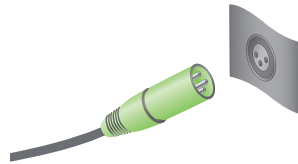
Mic input = 3.5 mm mono jack

3.5 mm Jack cable



Mic input = 6.3 mm <-> 1/4 inch mono jack

3.5 mm <-> 6.3 mm Jack adapter

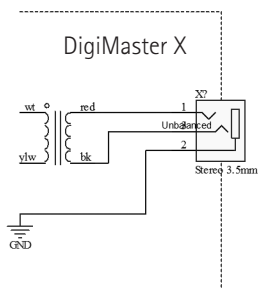


Mic input = XLR

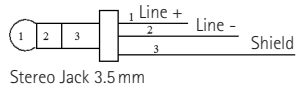
-> XLR jack cable

Balanced input vs unbalanced input

Both balanced and unbalanced system inputs can be used with the DigiMaster X. However the balanced connection is recommended.



Balanced



Stereo Jack 3.5 mm

1 = Tip = Line +
2 = Ring = Line -
3 = Sleeve = Shield

Unbalanced

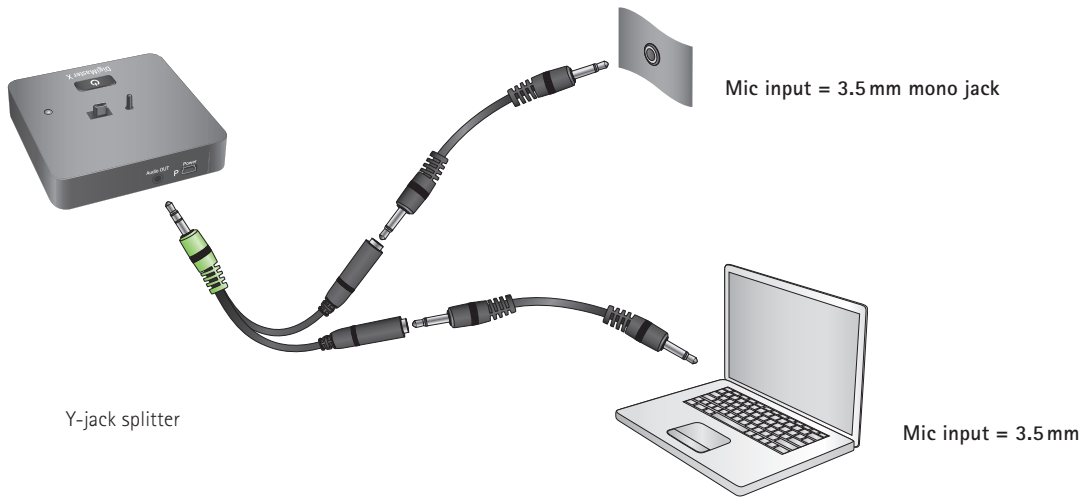


Mono Jack 3.5 mm

1 = Tip = Signal
2 = Sleeve = Ground

The DigiMaster X has a balanced transformer-coupled mono output to interface with existing amplification systems.

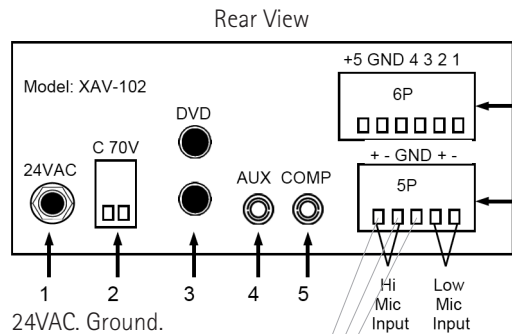
Connection to computer (recording) and amplification system



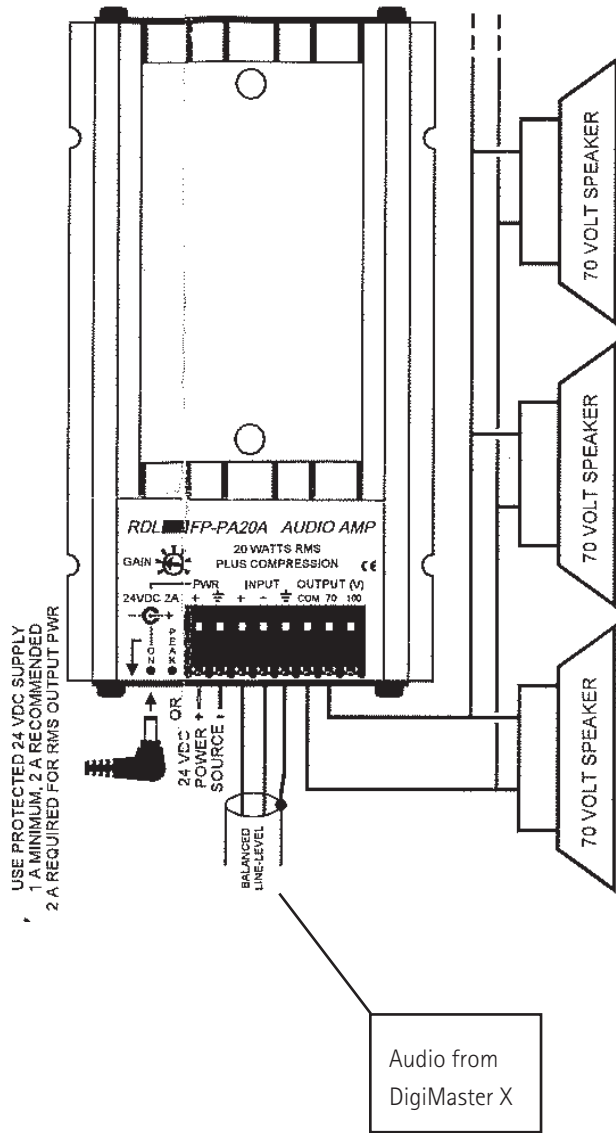
Caution: such connections may cause hum.

Connection to Grommes-Precision XAV-102-A

The gain of the microphone input is set by a potentiometer on the Wall Plate Remote Module. Precautions should be taken to prevent gain changes.

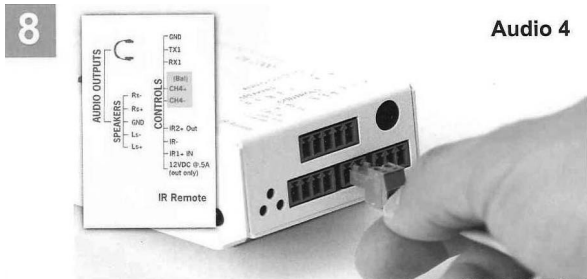


Connection to RDL FP-PA20A AUDIO AMP

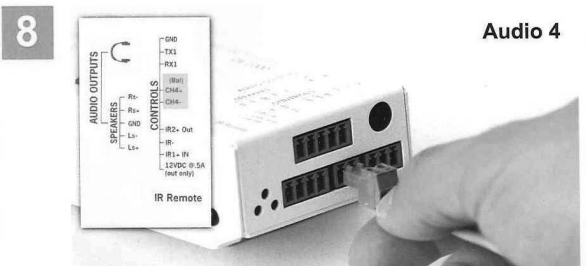


Connection to Calypso CA-1000

The CA Config software program is required to set the gain of the CA-1000.



Terminate the 2-pin Phoenix connector to the CH4+/CH4- (Bal) series-socket as depicted above.

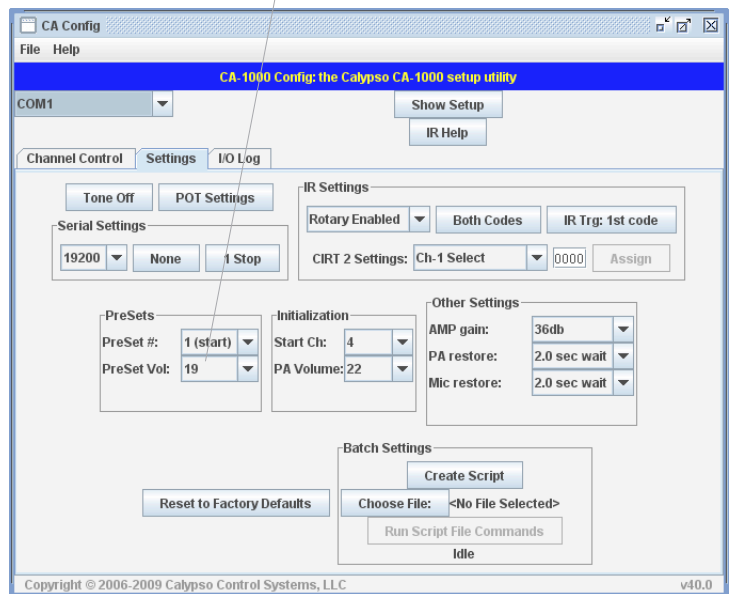


Terminate the 2-pin Phoenix connector to the CH4+/CH4- (Bal) series-socket as depicted above.

Shielding



Identical values



The screenshot show:

- Set-up on channel 4 for DigiMaster X
- Mono, Gain 32
- Fine-tune the volume
- Change the 'PreSet Vol:' to the same value as the Master out volume

Connection to CAT 855 Lightspeed

Connect the cable (1 × 3.5 mm Mono and 2 × RCA) from the DigiMaster X output and CD/DVD input of the CAT 885 amplifier.



Set the microphone gain

Connect inspiro with the DigiMaster X. Increase the DigiMaster X's volume level to +8dB in the inspiro menu.

Turn the volume knob of the CD/DVD input clockwise as far as it will go. In case of acoustical feedback, decrease the volume of the CAT 855 amplifier incrementally, until you can walk throughout the room without any acoustical feedback.

Reset the volume level of the DigiMaster X to 0dB in the inspiro menu.

Label and Lock the volume control

Mark the position of the volume knob with a permanent marker.

Rename the CD/DVD input of the CAT 855 amplifier to DigiMX using an adhesive sticker.

To protect the volume control knob against inadvertent operation, squeeze a wooden toothpick between the volume knob and the housing of the CAT 885.

Trim the toothpick.

