



Phonak ComPilot and LG Bluetooth pairing guide

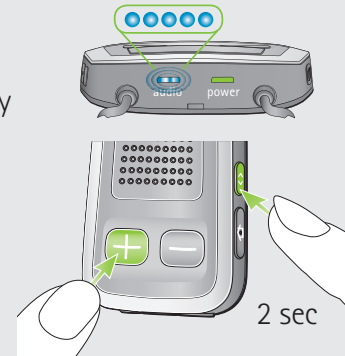
PHONAK

life is on

1. Charge and turn on the mobile phone and ComPilot.
2. Place them next to each other.

3. Prepare ComPilot for pairing

- Press and hold the Connect  and Volume  buttons simultaneously for 2 seconds until the Audio indicator starts to rapidly blink blue.
- Start the pairing process on the phone as described below.
- Please consult your phone's user guide if you need more information.



4. Prepare the mobile phone for pairing

Find the connectivity settings of the phone. With most models, the following navigation applies. The **Bold** terms might be different depending on the exact phone model.


Pairing older models

- Select **Menu > Tools > Connectivity Bluetooth > Settings**
- Ensure Bluetooth is turned **On**
- Select **Done > Paired devices > Add**
- Wait until **Phonak ComPilot** is found
- Highlight the **ComPilot** in the list then **OK**
- Enter the PIN code **0000** (4 zeros)
- Select **OK**

Pairing smartphone models (touchscreen)

- Press the **Menu** key
- Touch **Settings > Wireless controls**
- Ensure Bluetooth is turned **On**
- Touch **Bluetooth settings**
- Wait until **Phonak ComPilot** is found
- Select the **Phonak ComPilot** in the list of devices
- Enter the PIN code **0000** (4 zeros)
- Select **OK**

5. End of pairing

- After successful pairing, the ComPilot Audio indicator will stop rapid flashing blue.
- Additionally a headset symbol  may appear on the main screen of your phone.
- After 2 minutes the ComPilot will automatically exit from pairing mode. If step 4 was not completed before, simply start the pairing mode on ComPilot again as described in step 3.