

# Roger Select™

Quick setup guide | Schnellstartanleitung

Guide d'installation rapide | Snel aan de slag



roger

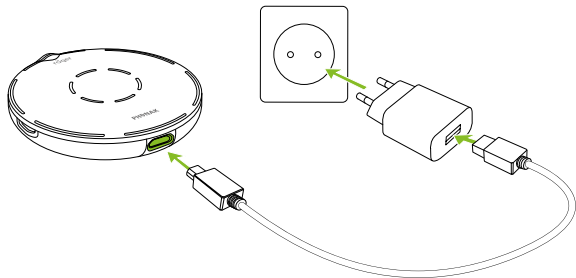


A Sonova brand

**PHONAK**  
life is on

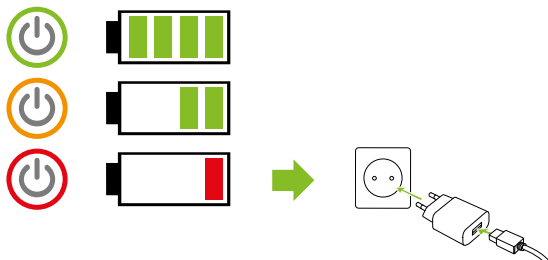
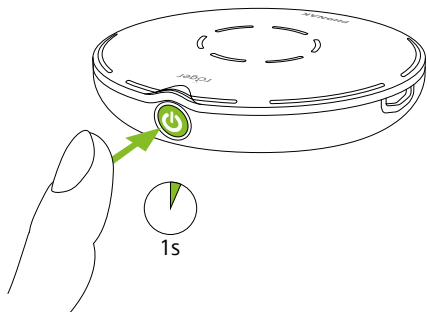
1

Charging / Aufladen  
Charger / Laden



2

Switching on / Einschalten  
Mettre en marche / Inschakelen

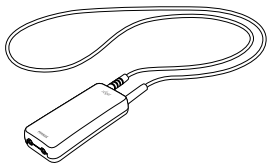


3

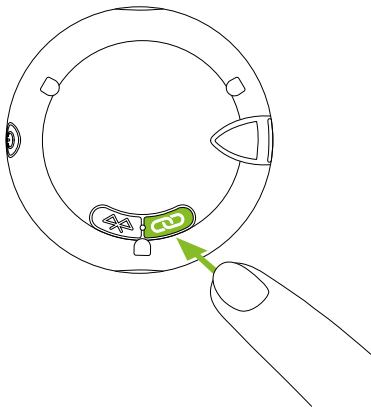
Connecting / Verbinden  
Connector / Verbinden



or  
oder  
ou  
of

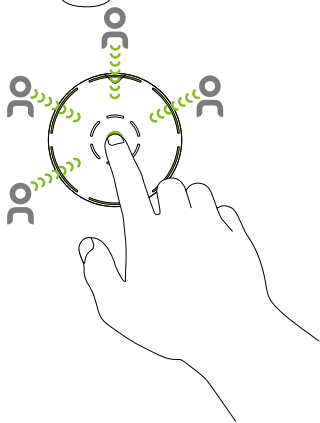
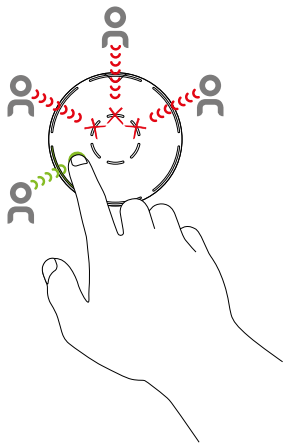


10 cm / 3 inch



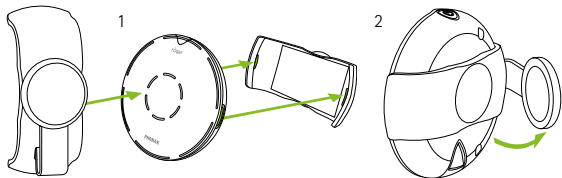
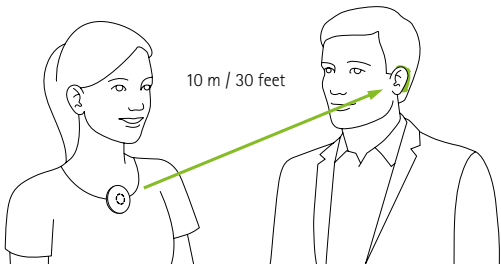
4

Use on the table / Verwendung auf dem Tisch  
Utilisation sur la table / Gebruik op tafel

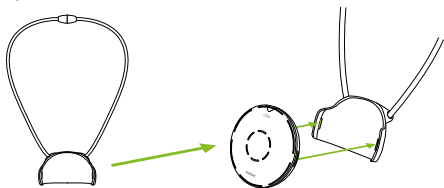


5

Use with a speaker / Verwendung mit einem Sprecher  
Utilisation avec un locuteur / Gebruik met een spreker



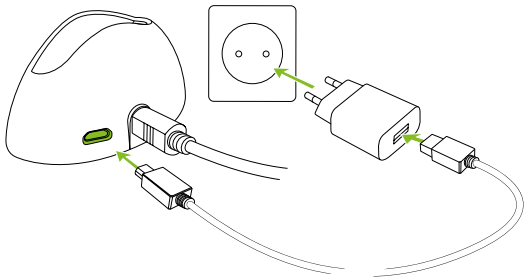
or / oder / ou / of



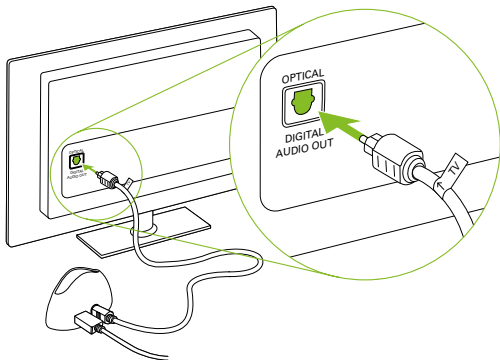
6

Use with the TV / Verwendung mit dem Fernseher  
Utiliser avec le téléviseur / Gebruik met de televisie

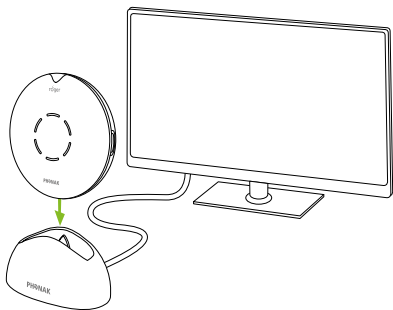
1



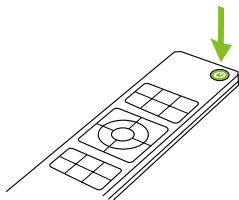
2



3



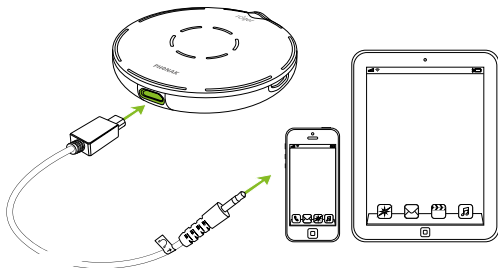
4





7

Use with an audio device / Verwendung mit einem Audiogerät / Utiliser avec un appareil audio / Gebruik met een audio-apparaat



8

For further information, please refer to the User Guide.  
Weitere Informationen zur Anwendung finden Sie in der Gebrauchsanweisung.

Pour plus d'informations, veuillez vous référer aux instructions d'utilisation.

In de gebruiksaanwijzing vindt u meer gedetailleerde informatie.





Phonak Communications AG  
Laenggasse 17  
CH-3280 Murten  
Switzerland

[www.phonak.com](http://www.phonak.com)

